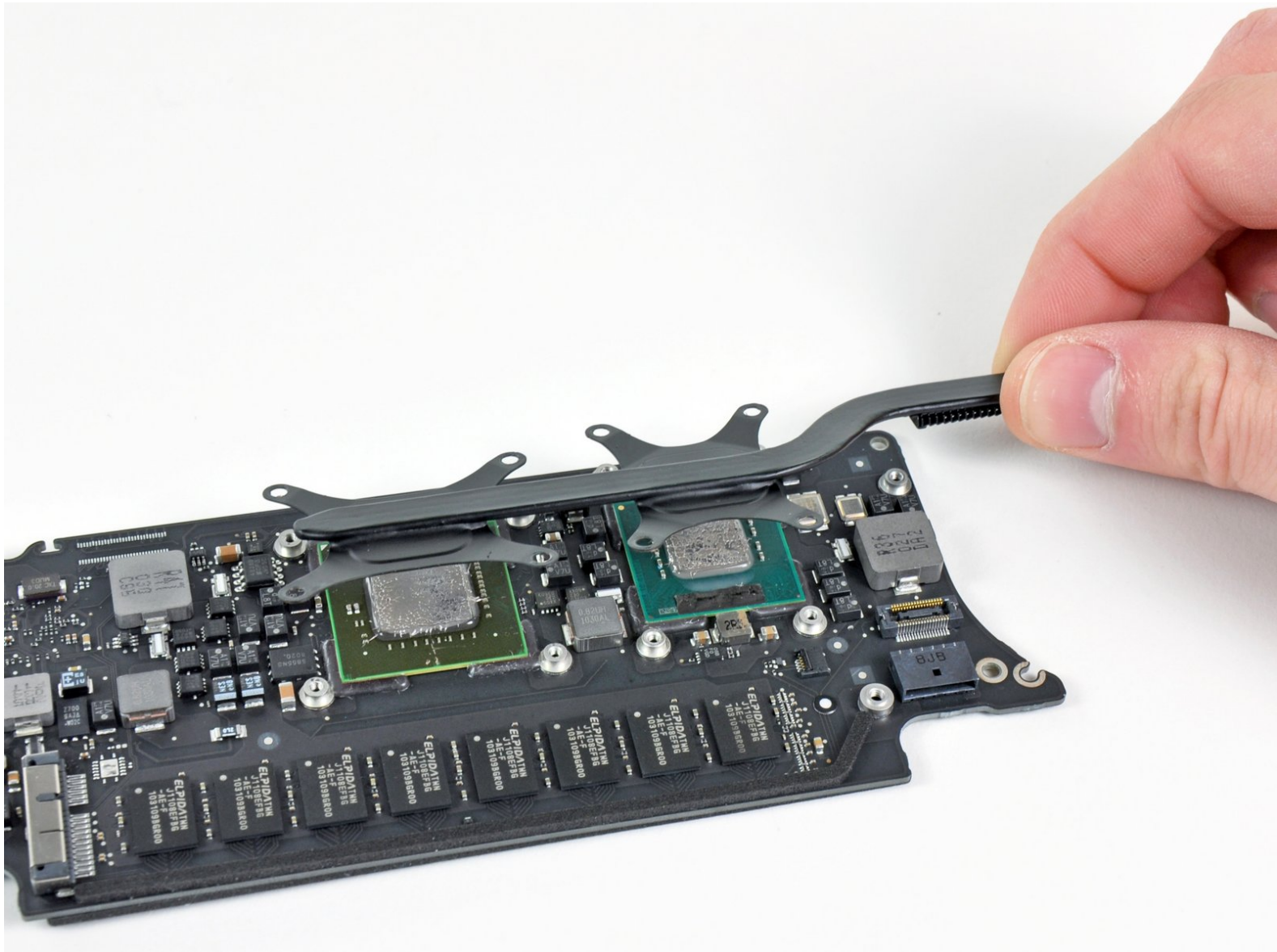




# MacBook Air 11" Late 2010 Logic Board Replacement

Replace the bare logic board on your MacBook Air 11" Late 2010.

Written By: Andrew Bookholt



## INTRODUCTION

Use this guide to replace the bare logic board on your MacBook Air. Before reinstalling the heat sink, be sure to apply a new layer of [thermal paste](#).



### TOOLS:

- [Arctic Silver ArctiClean](#) (1)
- [Arctic Silver Thermal Paste](#) (1)
- [P5 Pentalobe Screwdriver Retina MacBook Pro and Air](#) (1)
- [Spudger](#) (1)
- [T5 Torx Screwdriver](#) (1)



### PARTS:

- [MacBook Air 11" \(Late 2010\) 1.4 GHz Logic Board](#) (1)
- [MacBook Air 11" \(Late 2010\) 1.6 GHz Logic Board](#) (1)

## Step 1 — Lower Case



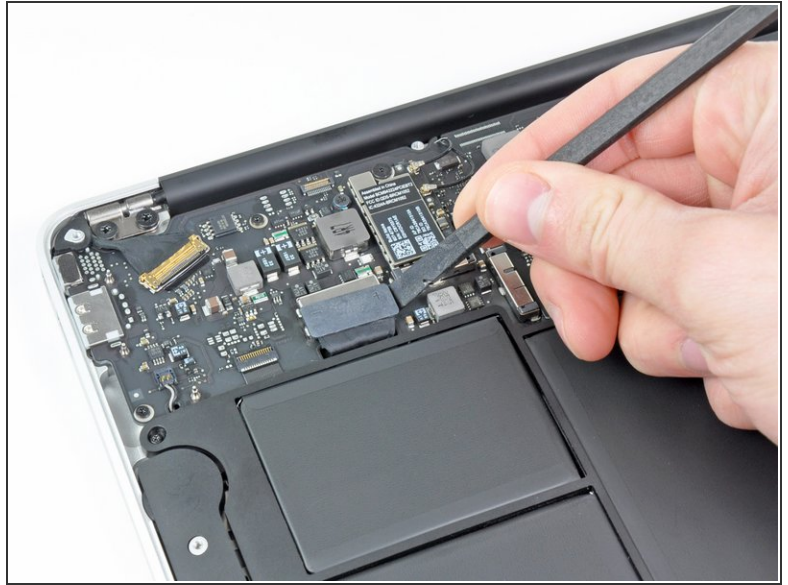
- ✦ Before proceeding, close your computer and lay it on a soft surface top-side down.
- Remove the following ten screws:
  - Two 8 mm 5-point Pentalobe screws
  - Eight 2.5 mm 5-point Pentalobe screws
- i The special screwdriver needed to remove the eight 5-point Pentalobe screws can be found [here](#).


## Step 2



- Wedge your fingers between the display and the lower case and pull upward to pop the lower case off the Air.
- Remove the lower case and set it aside.

## Step 3 — Battery

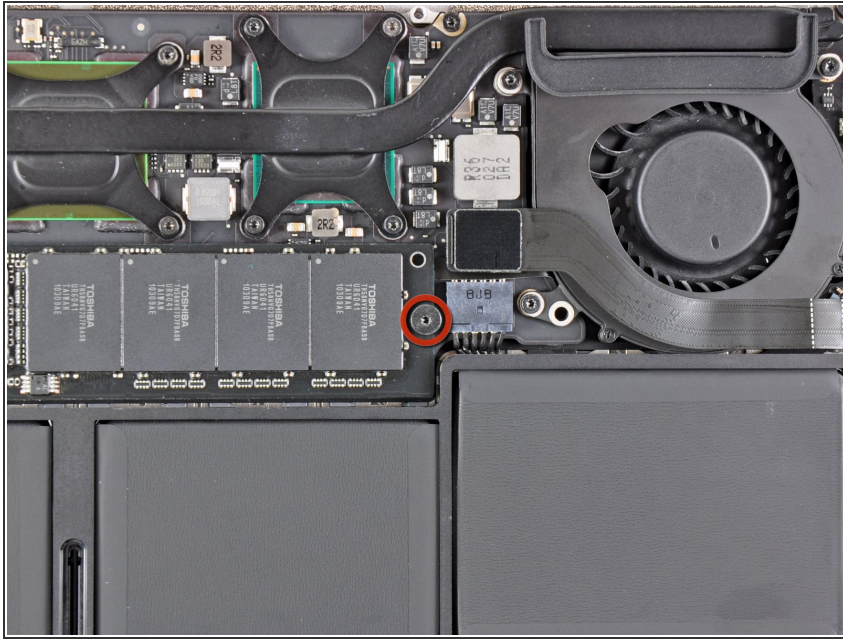


 In this step you will disconnect the battery to help avoid shorting out any components during service.

- Use the flat end of a spudger to pry both short sides of the battery connector upward to disconnect it from its socket on the logic board.
- Bend the battery cable slightly away from the logic board so the connector will not accidentally contact its socket.

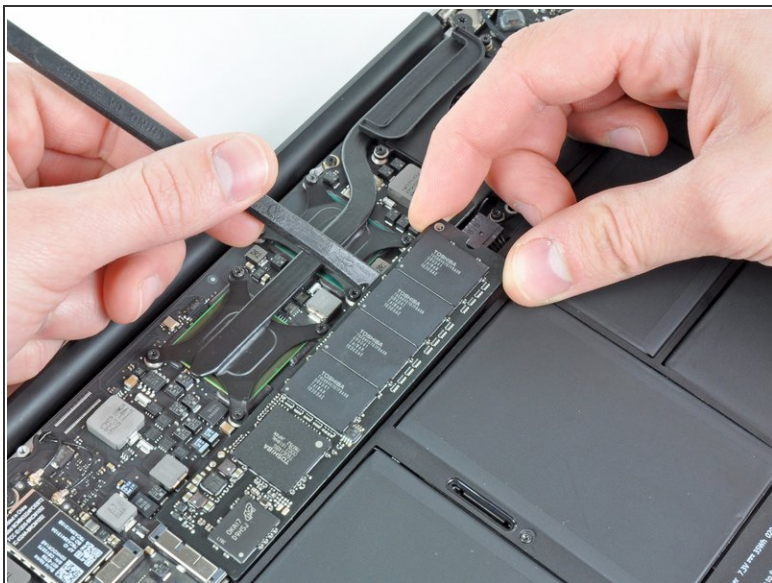


## Step 4 — Solid-State Drive



- Remove the single 2.9 mm T5 Torx screw securing the SSD to the logic board.

## Step 5



- Use a spudger to help lift the free end of the SSD just enough to grab it with your other hand.

⚠ Do not lift the end of the SSD excessively.

- Pull the drive straight out of its socket and remove it from the logic board.

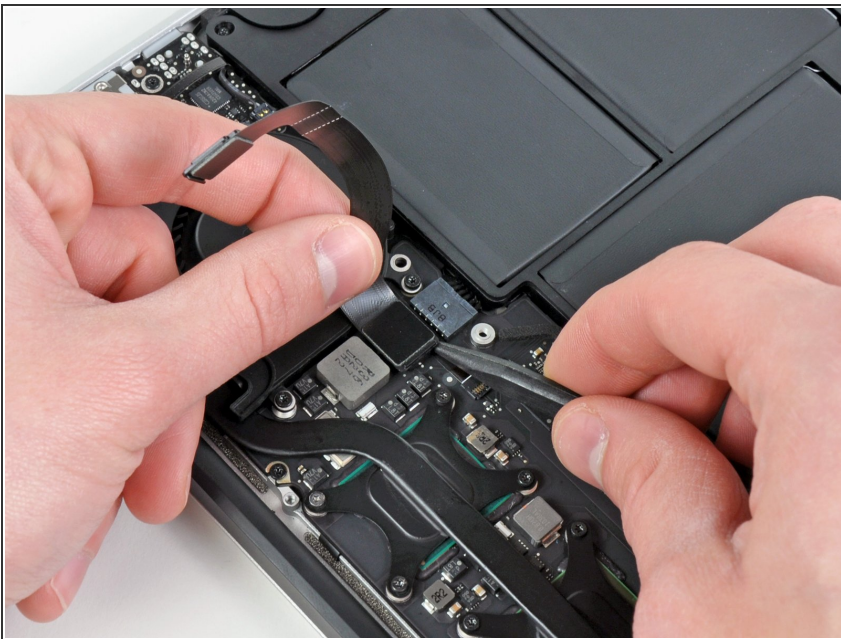
📌 When reinstalling the SSD, be sure it is properly seated before reinstalling its retaining screw.

## Step 6 — I/O Board Cable



- Use the flat end of a spudger to pry the I/O board cable connector upward out of its socket on the I/O board.

## Step 7



- ⚠ The following connector has an especially deep socket. Use care when disconnecting it.
- While gently pulling the I/O board cable upward near its connection to the logic board, use the tip of a spudger to pry upward on alternating sides of the connector to help "walk" it out of its socket.
- Remove the I/O board cable.

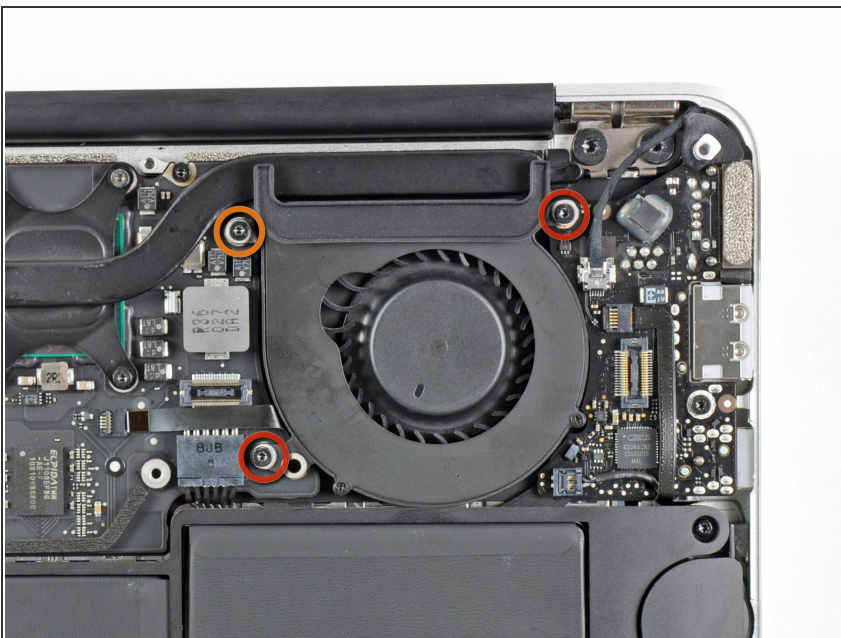


## Step 8 — Fan



- Use the tip of a spudger to carefully flip up the retaining flap on the fan cable ZIF socket.
- ⚠ Be sure you are prying up on the hinged retaining flap, **not** the socket itself.

## Step 9



- Remove the following three screws securing the fan to the upper case:
  - Two 5.2 mm T5 Torx screws
  - One 3.6 mm T5 Torx screw

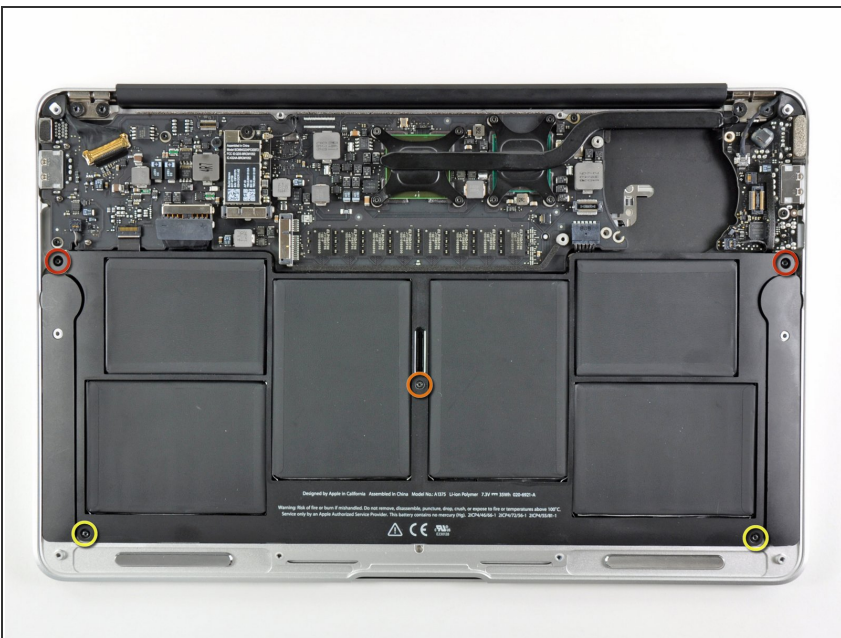


## Step 10



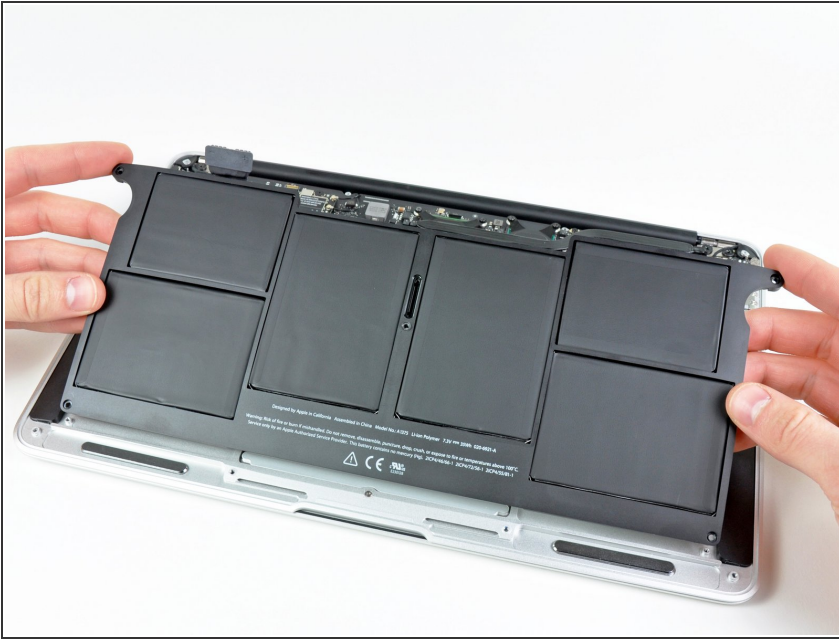
- Lift the fan out of the upper case and carefully pull the fan ribbon cable out of its socket as you remove it from the Air.

## Step 11 — Battery



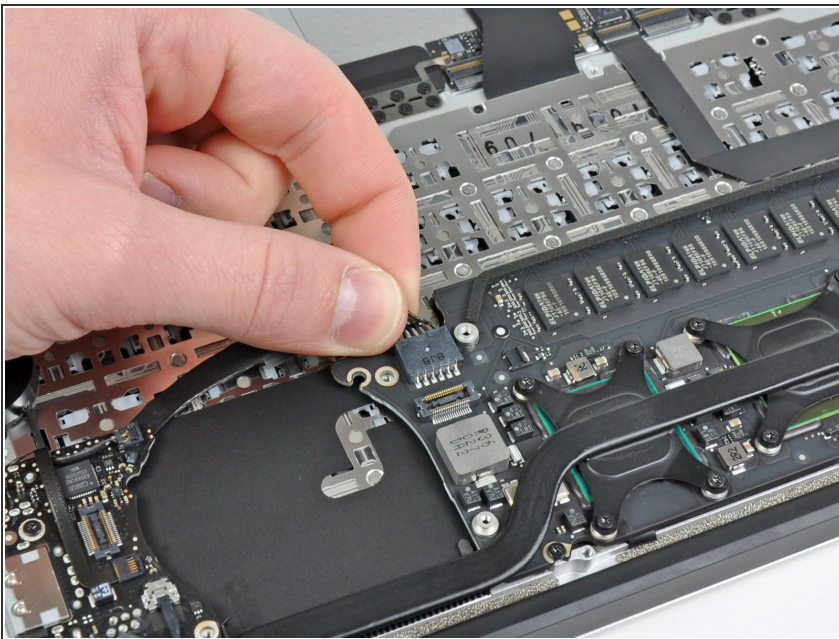
- Remove the following five screws securing the battery to the upper case:
  - Two 5.2 mm T5 Torx screws
  - One 6 mm T5 Torx screw
  - Two 2.6 mm T5 Torx screws

## Step 12



- ⚠ Do not touch or squeeze the six lithium polymer cells when handling the battery.
- Lift the battery from its edge nearest the logic board and remove it from the upper case.

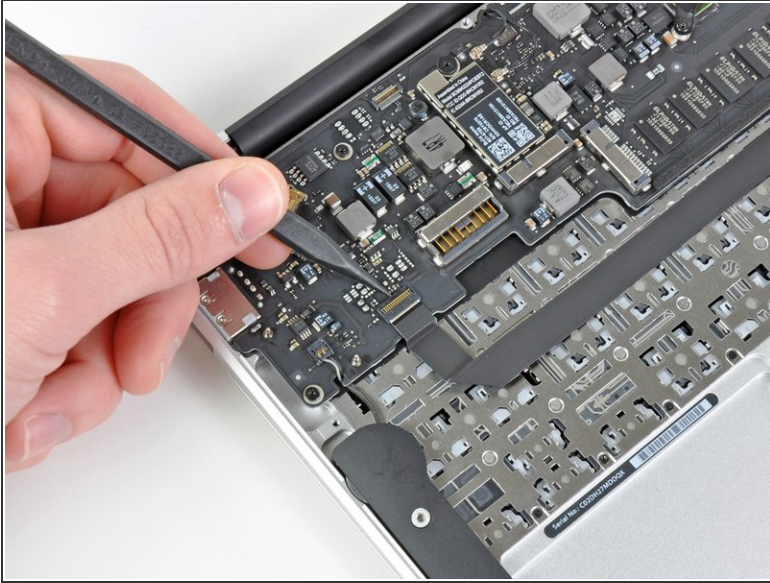
## Step 13 — Logic Board



- Disconnect the I/O board by pulling the power cable away from its socket on the logic board.
- ⓘ Pull the cable parallel to the face of the logic board toward the front edge of the Air.



## Step 14

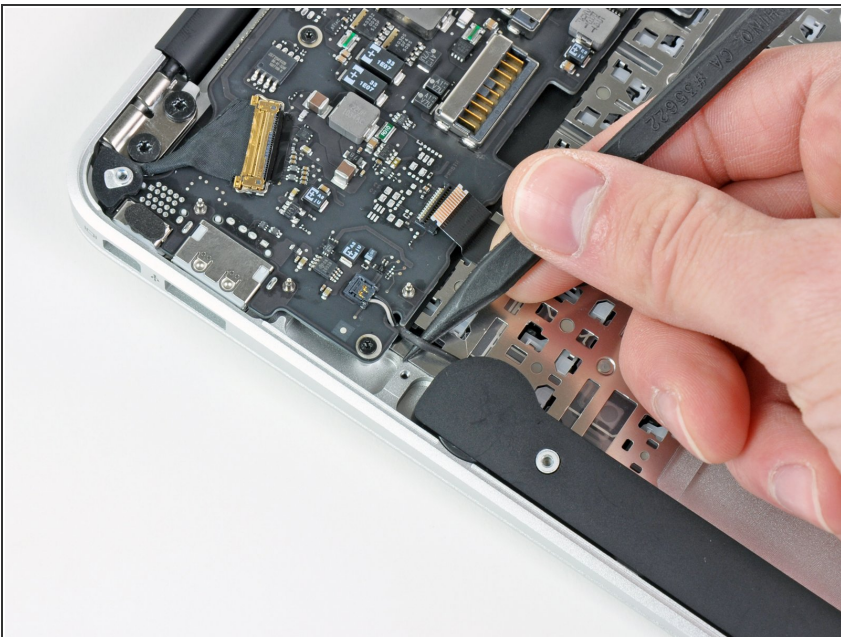


- Use the tip of a spudger or your fingernail to flip up the retaining flap on the trackpad ribbon cable ZIF socket.

⚠ Be sure you are prying up on the hinged retaining flap, **not** the socket itself.

- Pull the trackpad ribbon cable straight out of its socket toward the front edge of the Air.

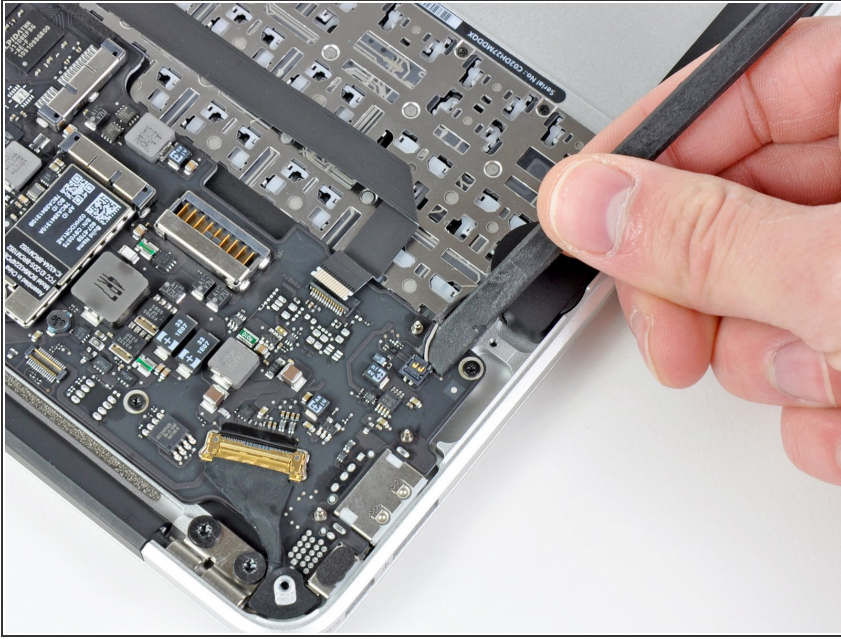
## Step 15



- Use the tip of a spudger to de-route the right speaker cable from the slot cut into the logic board.

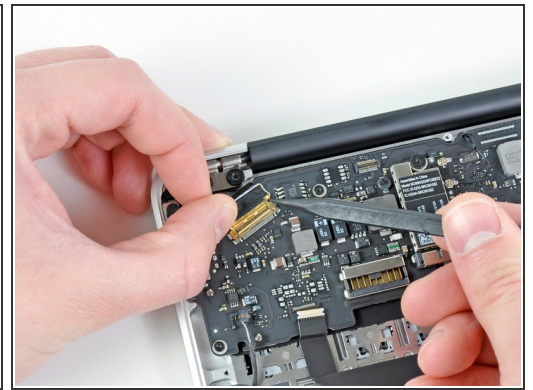
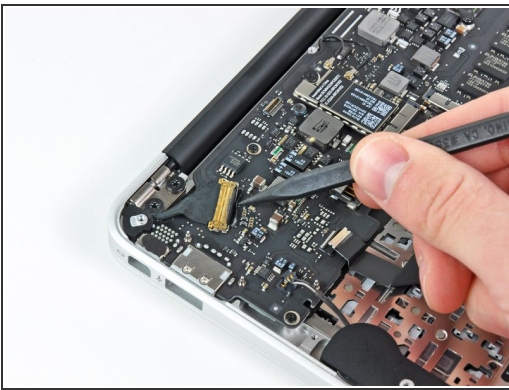


## Step 16



- Use the flat end of a spudger to pry the right speaker cable connector up and out of its socket on the logic board.
- ⓘ Pry up from beneath the cables.

## Step 17

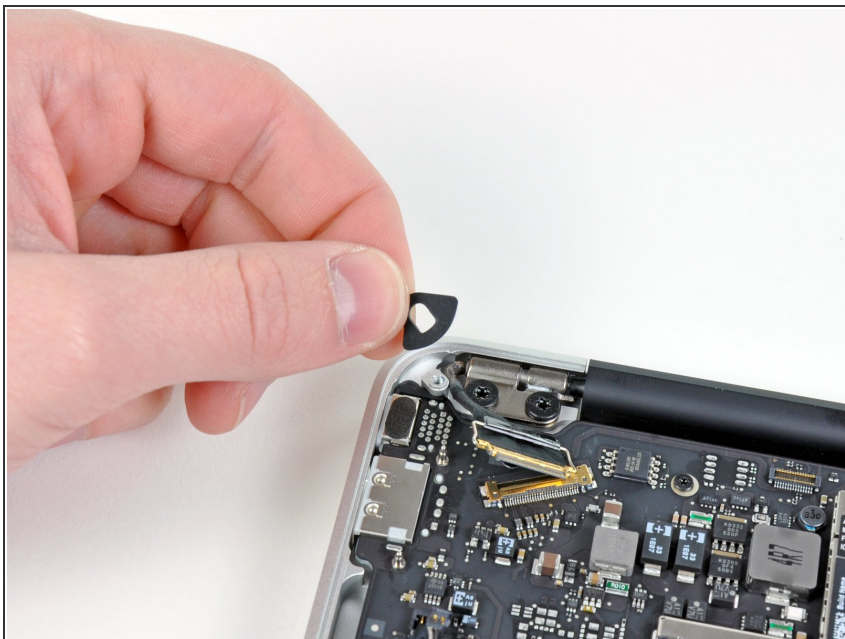


- Gently push the tip of a spudger under the black plastic flap stuck to the display data cable lock to make the lock pop upward and away from the socket.
- While holding the lock away from the socket, use the tip of a spudger and your fingers to gently remove the display data cable from its socket.



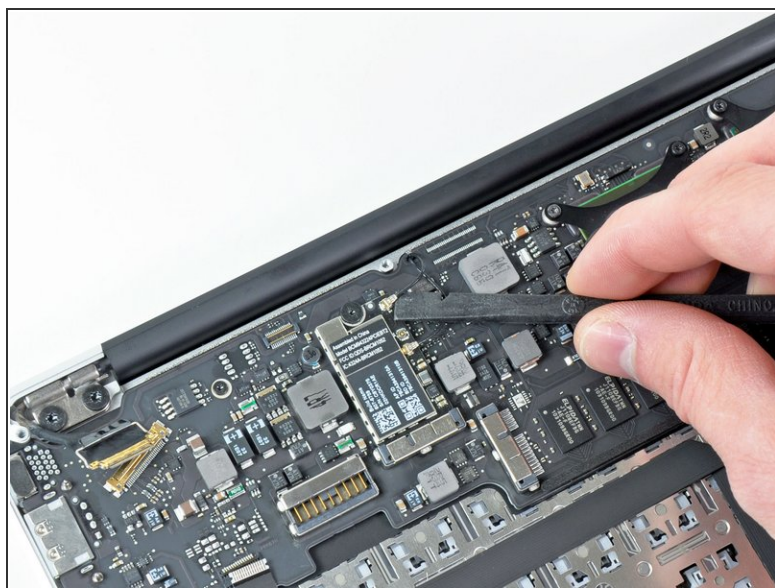
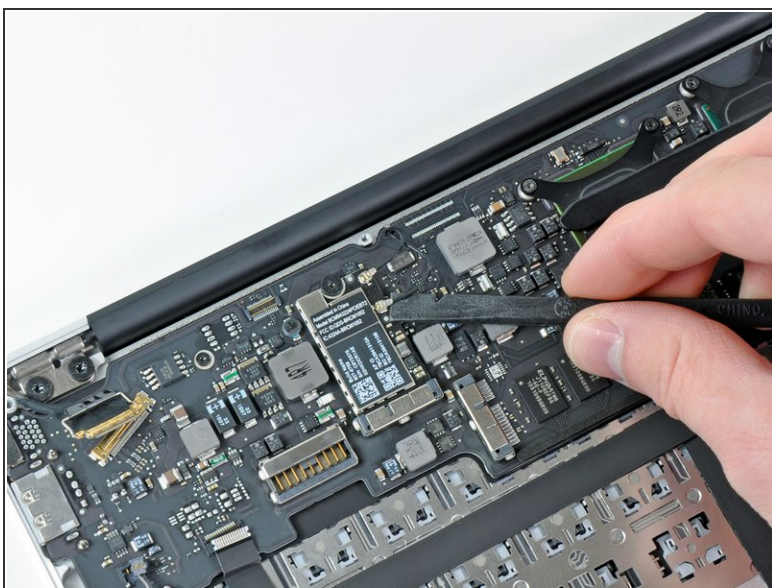
Do not pull upward on the display data cable as you disconnect it, as its socket may break off the logic board.

## Step 18



- Remove the small rubber gasket from the corner of the upper case near the display data cable.

## Step 19



- Use the flat end of a spudger to pry both antenna cable connectors up and off their sockets on the AirPort/Bluetooth card.

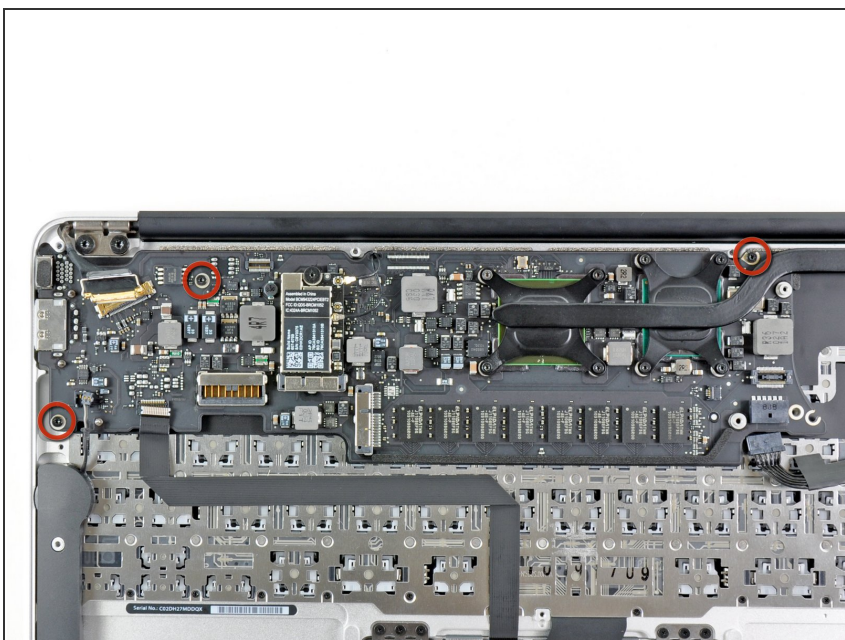


## Step 20



- Gently de-route the antenna cables from the slot cut into the logic board.

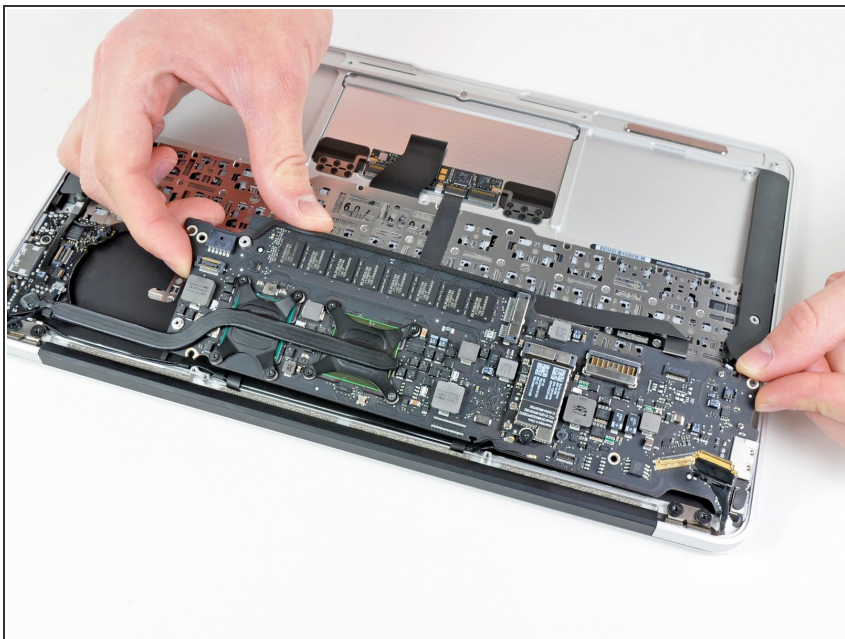
## Step 21



- Remove the three 3.6 mm T5 Torx screws securing the logic board to the upper case.

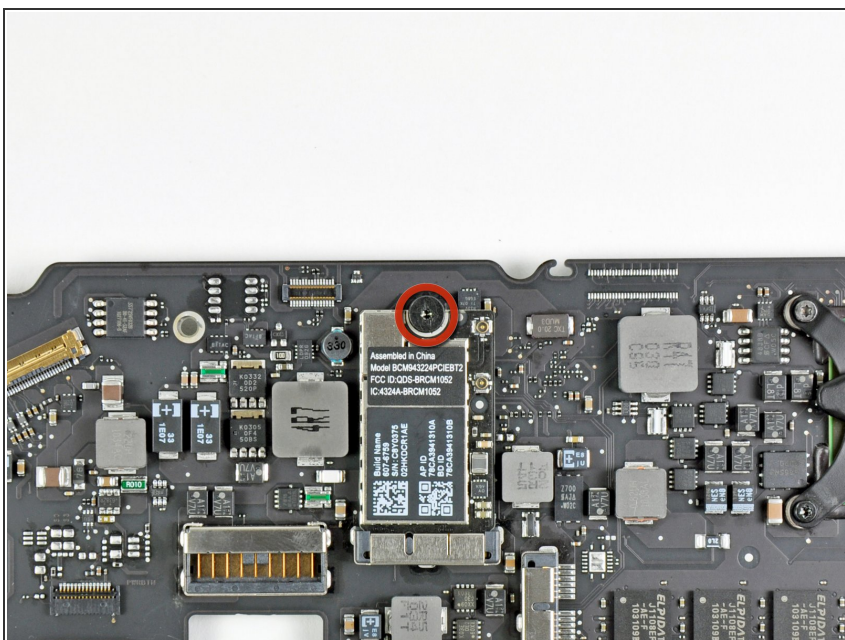


## Step 22



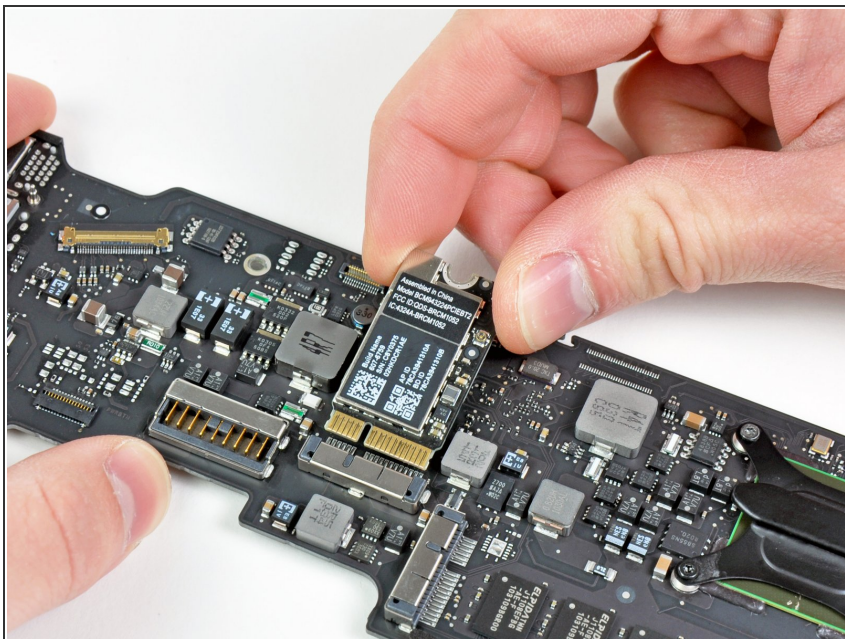
- Gently lift the logic board assembly out of the upper case, minding the fragile heat sink and any cables that may get caught.

## Step 23 — Logic Board



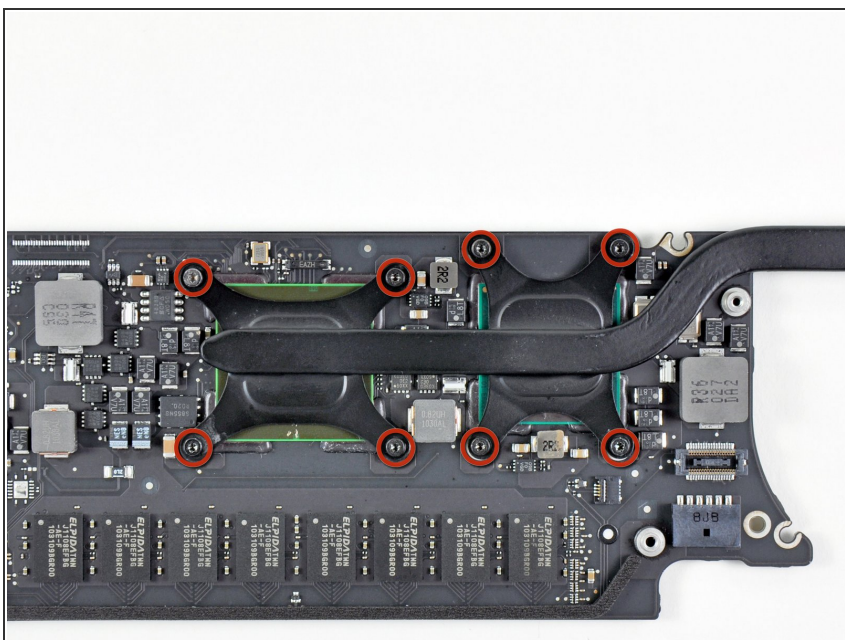
- Remove the single 2.9 mm T5 Torx screw securing the AirPort/Bluetooth card to the logic board.

## Step 24



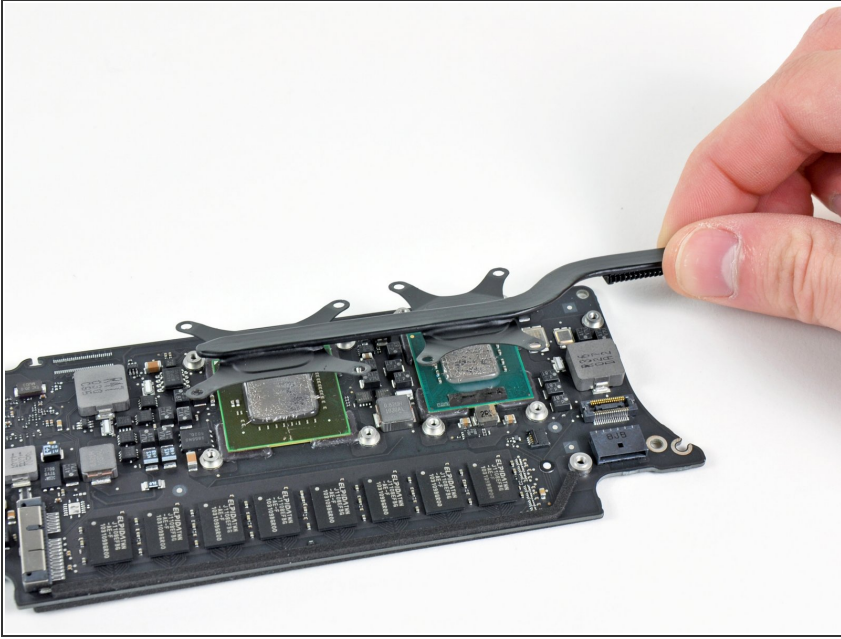
- Slightly lift the free end of the AirPort/Bluetooth board and pull it out of its socket on the logic board.
- Remove the AirPort/Bluetooth board from the logic board.

## Step 25



- Remove the eight 2.5 mm T5 Torx screws securing the heat sink to the logic board.

## Step 26



- ⓘ If the heat sink seems to be stuck to the logic board after removing all eight screws, use a spudger to carefully separate the heat sink from the faces of the CPU and GPU.
- Remove the heat sink from the logic board.
- Logic board remains.
- When reinstalling the heat sink, be sure to apply a new layer of [thermal paste](#). If you have never applied thermal paste before, we have a [guide](#) that makes it easy.

To reassemble your device, follow these instructions in reverse order.